

Council Bluffs

IOWA

RAGBRAI 2019
DRIVING DIRECTIONS

CONTENTS

Charters:..... 2

Main Camp & Baggage Truck 3

Family Campground: 4

RV Campground: 5

Overflow Campground:..... 6

North Group Campground: 7

South Group Campground: 8

Volunteer Parking: 9

General Parking:..... 9

Long Term Parking: 10

Basketball Tournament / Field House:..... 11

Support & Trail Vehicles..... 12

Charters:

- From I-80 Westbound, take the **Mid-America Center S 24th St** exit (*Exit 1B*)
- Turn right on **S 24th St**
- Turn left on **Mid-America Dr**
- **There will be an officer posted at the intersection of Mid-America Dr and Marc Blvd to check your paperwork**
- **IF YOU DO NOT HAVE YOUR PAPERWORK, YOU WILL NOT BE ALLOWED BEYOND THE CHECK POINT**

Buses

- Beyond the check point, you will use the right side of **Mid-America Dr** to drop off passengers.
- To exit, continue on **Mid-America Dr** to **24th Ave**. An officer will open the barricade
- Continue on to **23d Ave**.
- **YOU MUST TURN LEFT ONTO S 35th ST**
- Turn left on Nebraska Ave to access interstate

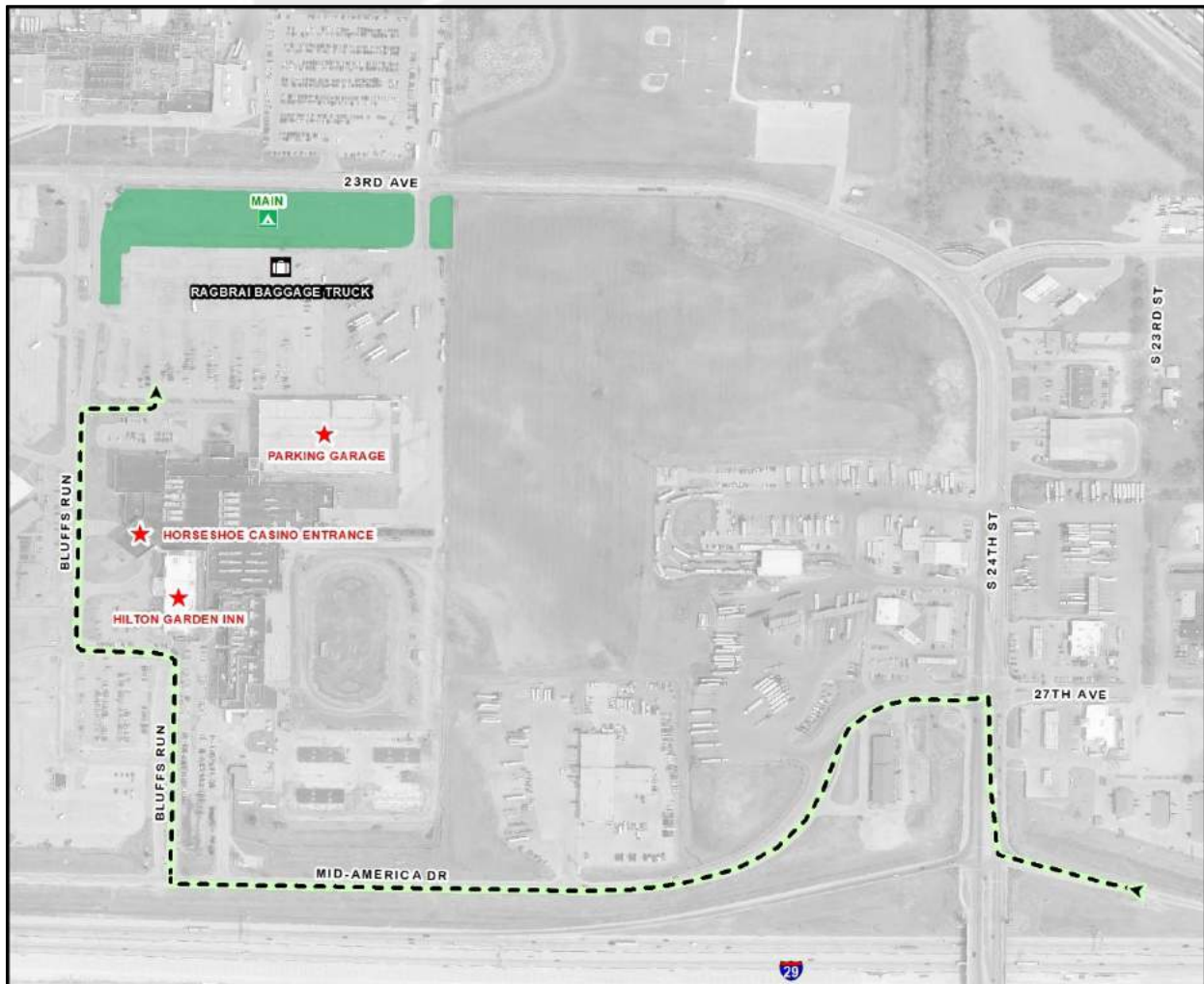
Semis/Support Vehicles

- Beyond the check point, you must park on the left curb line. Vehicles will be allowed to remain here for the duration of the event
- Vehicles can be moved to the right curb to load equipment once the event has concluded
- To exit, follow instructions under the **“Buses”** header above



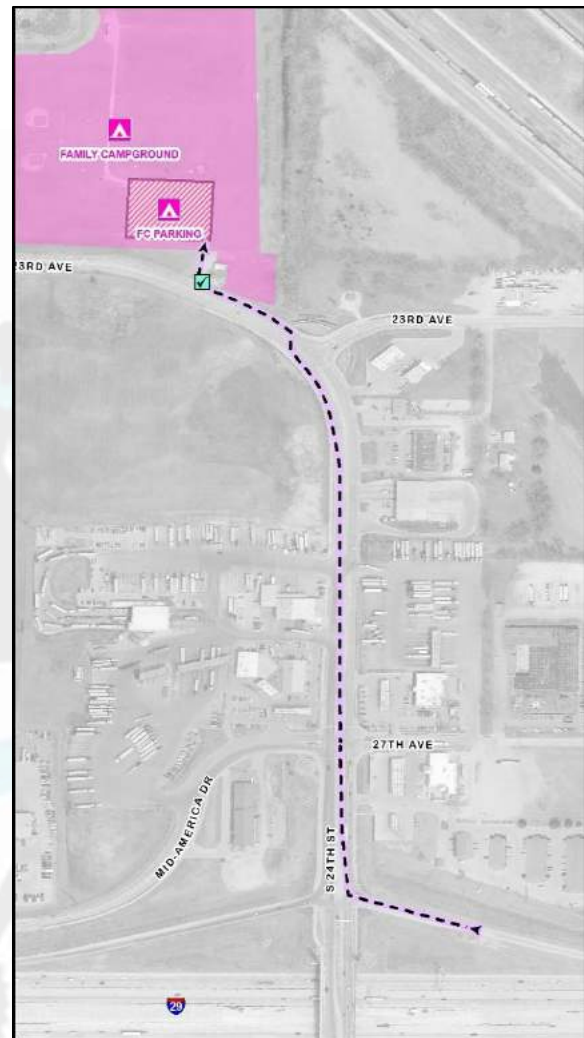
Main Camp & Baggage Truck

- From I-80 Westbound, take the **Mid-America Center S 24th St** exit (*Exit 1B*)
- Turn right on **S 24th St**
- Turn left on **Mid-America Dr**
- Turn right at the Horseshoe Casino entrance (**Bluffs Run**)
- Continue north towards Hilton Garden Inn
- Follow the road as it turns west
- Turn right at intersection (towards Horseshoe Casino entrance)
- Continue north on **Bluffs Run**
- Turn right at stop sign (towards parking garage)
- Turn left into parking lot



Family Campground:

- From I-80 Westbound, take the **Mid-America Center S 24th St** exit (**Exit 1B**)
- Turn right on **S 24th St**
- Continue on **S 24th St** to **23rd Ave**
- There will be an officer here to control access to the campground
- **PLEASE PROVIDE PROOF OF YOUR RAGBRAI REGISTRATION TO BE ALLOWED PAST THE CHECKPOINT**
- Large vehicles and support vehicles will be allowed to park on the right curb of **23rd Ave**
- All other lanes on **23rd Ave** are closed to bike and foot traffic during event



RV Campground:

RV Camp 1

- From I-29 Northbound, take the **Riverboat Casino Nebraska Ave** exit (*Exit 52*)
- Turn left on **Nebraska Ave**
- Turn right on **S 35th St**
- Turn right on **23rd Ave**
- Continue on **23rd Ave**; entrance to RV Camp 1 is on the right
- **Please do not block intersections with camper**

RV Camp 2

- From **S 35th St**, continue on to **23rd Ave**
- Turn left on **S 32nd St**
- Turn left into AMC parking lot

RV Camp 3

- From **S 35th St**, continue on to **23rd Ave**
- Turn left on **S 32nd St**
- Turn right into Holiday Inn Express access road



Overflow Campground:

- From I-29 Northbound, take the **Riverboat Casino Nebraska Ave** exit (*Exit 52*)
- Turn right on **Nebraska Ave**
- Turn left on **River Rd**
- Continue on **River Rd**; entrance to Overflow Campground is on the left



North Group Campground:

- From I-29 Northbound, take the **Casino 9th Ave** exit (*Exit 53 A*)
- Turn right on **9th Ave**
- Turn right on **S 35th St**
- Continue on **S 35th St** to **16th Ave**
- Entrance to North Group Campground will be on the right
- **YOU MUST USE THE CROSSWALK AT S 35TH ST AND NEBRASKA AVE TO ACCESS THE BIKE PATH. DO NOT CROSS IN CAR TRAFFIC LANES.**



South Group Campground:

- From I-29 Northbound, take the **Riverboat Casino Nebraska Ave exit (Exit 52)**
- Turn left on **Nebraska Ave**
- Turn right on **S 35th St**
- Turn right on **23rd Ave**
- Entrance to South Group Campground will be on the left



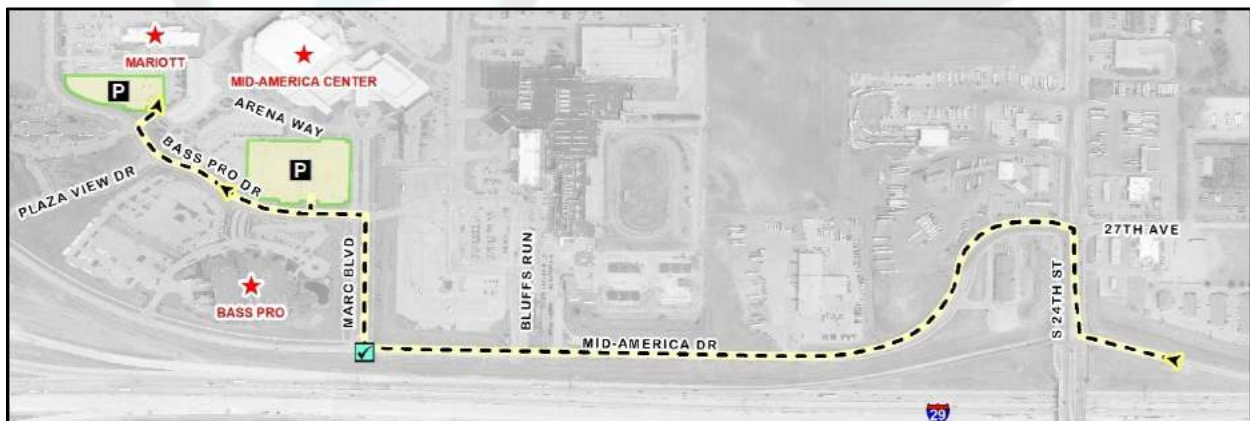
Volunteer Parking:

- From I-80 Westbound, take the **Mid-America Center S 24th St exit (Exit 1B)**
- Turn right on **S 24th St**
- Turn left on **Mid-America Dr**
- **There will be an officer posted at the intersection of Mid-America Dr and Marc Blvd to check your paperwork**
- Continue on to the Bass Pro Shop parking lot (first right past the check point)



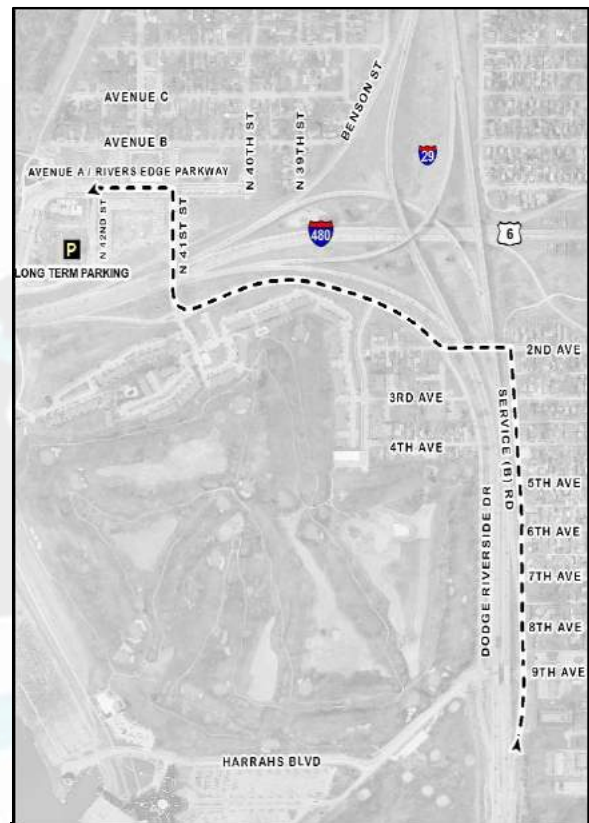
General Parking:

- From I-80 Westbound, take the **Mid-America Center S 24th St exit (Exit 1B)**
- Turn right on **S 24th St**
- Turn left on **Mid-America Dr**
- Turn right on **Marc Blvd**
- Turn left on **Bass Pro Dr**
- **General parking will be on the right. Additional general parking lot will be available south of the Marriott.**



Long Term Parking:

- From I-29 Northbound, take the **Casino 9th Ave** exit (*Exit 53 A*)
 - Continue straight on **Service Road B**
 - Turn left on **2nd Ave**
 - Turn right on **Dodge Riverside Dr**
 - Turn right on **N 41st St**
 - Turn left on **Avenue A / Rivers Edge Parkway**
 - Continue on **Avenue A / Rivers Edge Parkway** and enter parking garage (**park on Level 3**)
-
- From I-480 Eastbound, take the **Riverfront** exit (*Exit 0*)
 - Turn left on **N 41st St**
 - Turn left on **Avenue A / Rivers Edge Parkway**
 - Continue on **Avenue A / Rivers Edge Parkway** and enter parking garage (**park on Level 3**)



Basketball Tournament / Field House:

- From I-29 Northbound, take the **Riverboat Casino Nebraska Ave exit (Exit 52)**
- Turn left on **Nebraska Ave**
- Turn right on **S 35th St**
- Continue on **S 35th St**; it becomes **23rd Ave**
- Turn right on **S 32nd St**
- Turn left on **24th Ave**
- An officer will be posted here to check your paperwork and direct you to an open lot
- **IF YOU DO NOT HAVE A PARKING PASS FOR THE FIELD HOUSE, YOU WILL NOT BE ALLOWED TO PARK**
- Please carpool if possible; space will be limited due to RAGBRAI



Support & Trail Vehicles

- **ALL SUPPORT & TRAIL VEHICLES MUST EXIT EVENT & EXPO AREA VIA I-29 SOUTH**
- Exit Event & Expo area via **Mid-America Dr**
- Turn left on **23rd Ave**
- Continue on **23rd Ave**; it becomes **S 35th St**
- Turn left on **Nebraska Ave**
- Turn right on **River Road & I-29 S** intersection to access **I-29 South**
- Continue on **I-29 S** to **I-80 E**
- Continue on **I-80 E** to Atlantic
- The use of Hwy 6 East to Atlantic is not recommended; this route will be highly congested due to construction projects & event related traffic.





un **LEASH CB**
2019 Council Bluffs IOWA